

# HAWG HAWLERS BASS CLUB

1988 - 2016 CELEBRATING 29 YEARS

## Kentucky Lake - June 2016

**1st Place - Griff & Mike Estes**



**18 Fish 48.77 lbs**

### Contents

1ST PLACE	1
LAKE NEWS	1
BIG BASS	2
RESULTS (PLACES)	3
EVENT PICTURES	4-5
OUT ON A LEDGE	6-7
COMPLETE RESULTS	8
AOY RACE 2016	9
NEXT TOURNAMENT - MARK TWAIN LAKE	10
SPONSORS	11-13
OTHER NEWS	12

**A new club record!** No strangers to Kentucky Lake, Griff and Mike shattered the old club heavy stringer record set by Greg & Andy Shands in 2011 at Lake of the Ozarks of 42.05 pounds (16 fish) by weighing in 18 bass totaling 48.77 pounds at the club's first ever June Kentucky Lake tournament. Griff & Mike were fishing ledges on the north end of the lake by the dam throwing Carolina Rigged soft plastics and Jigs. **First Place Payout was \$284**

### Lake News

**Kentucky Lake** had some of the biggest stringers in club history. Each of the top 4 places had bags over 30 pounds with combined weight over 160 pounds. Jeremy Goins and Nathan Keith also broke Greg & Andy's old record with a total weight of 42.86 pounds and that only earned them second place! While the majority of the damage was done Kentucky style out on the ledges, there were also some good quality bass hanging out in the shallows and around boat docks. I want to congratulate each and every member who came to Kentucky with no prior experience fishing ledges and competed with a positive attitude, eager to learn and try a new fishing technique.

Number of Boats	25
Number of Fish Caught	150
Total weight all Fish	336.87 lbs
Avg Weight per Fish	2.24 lbs
# Fish > 4 lbs	6

Water Temperature	Mid 70's
Water Clarity	Stained
Air Temperature	Sat: Low/High 71/93 Sun: Low/High 82/91
Wind / Sky	Light Wind, some gusts Sunny
Water Level	Normal (summer pool)



# HAWG HAWLERS BASS CLUB

## BIG BASS

### Tournament Big Bass Ken Rapp



**Ken Rapp** received \$208 total for catching a 5.03 pound beast winning the Big Bass Payout of \$78 and an additional \$130 in side-pot winnings.

**Congratulations Ken!**

### Big Bass Saturday Chris Watkins



**Chris Watkin's** 4.26 lb largemouth on Saturday edged out Jake Currie's 4.25 lb bass by .01 pounds! Big bass payout for the day was \$78.

**Congratulations Chris!**





# HAWG HAWLERS BASS CLUB

## Places



**Jeremy Goins & Nathan Keith**  
2nd Place - \$234



**Rich Harper & Jake Currie**  
3rd Place - \$184



**Chris Watkins & Danny Butler**  
4th Place - \$144



**Bob Shibe & Casey Cross**  
5th Place - \$114



**Rich & Jason Shaw**  
6th Place - \$80



**James Jr & Steve Romaine**  
7th Place - \$62



# HAWG HAWLERS BASS CLUB

## Event Pictures





# HAWG HAWLERS BASS CLUB

## Event Pictures



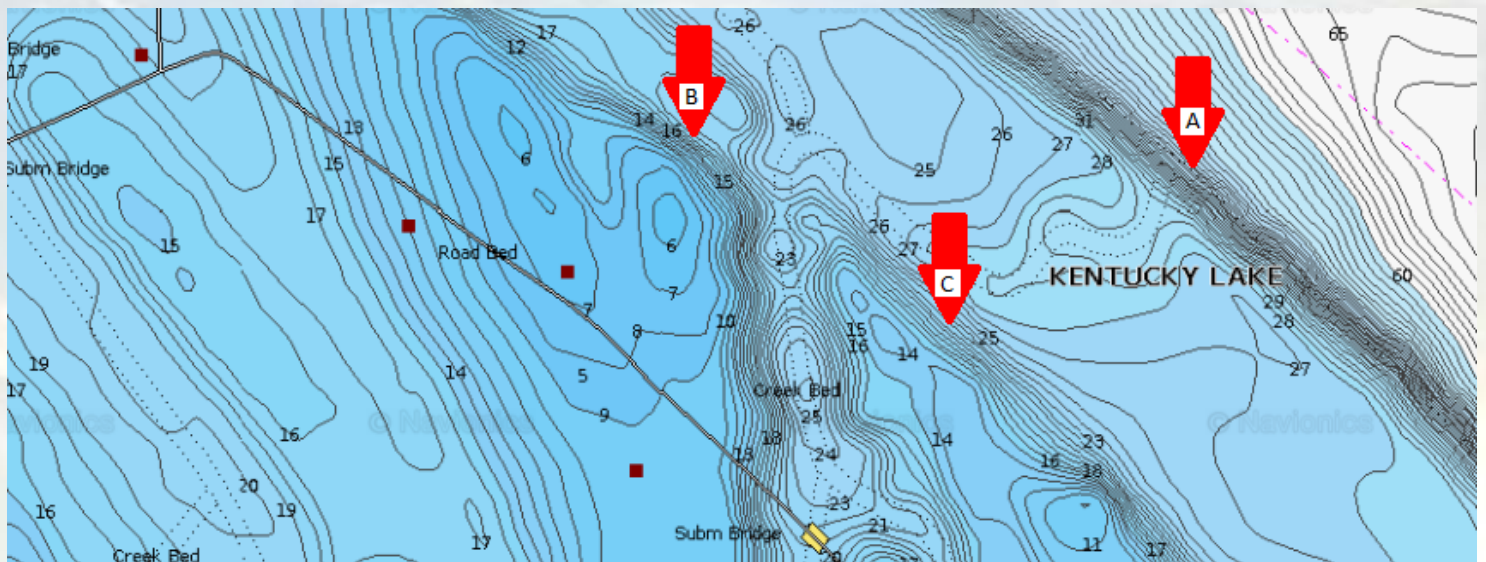


# HAWG HAWLERS BASS CLUB

## Out on a Ledge...

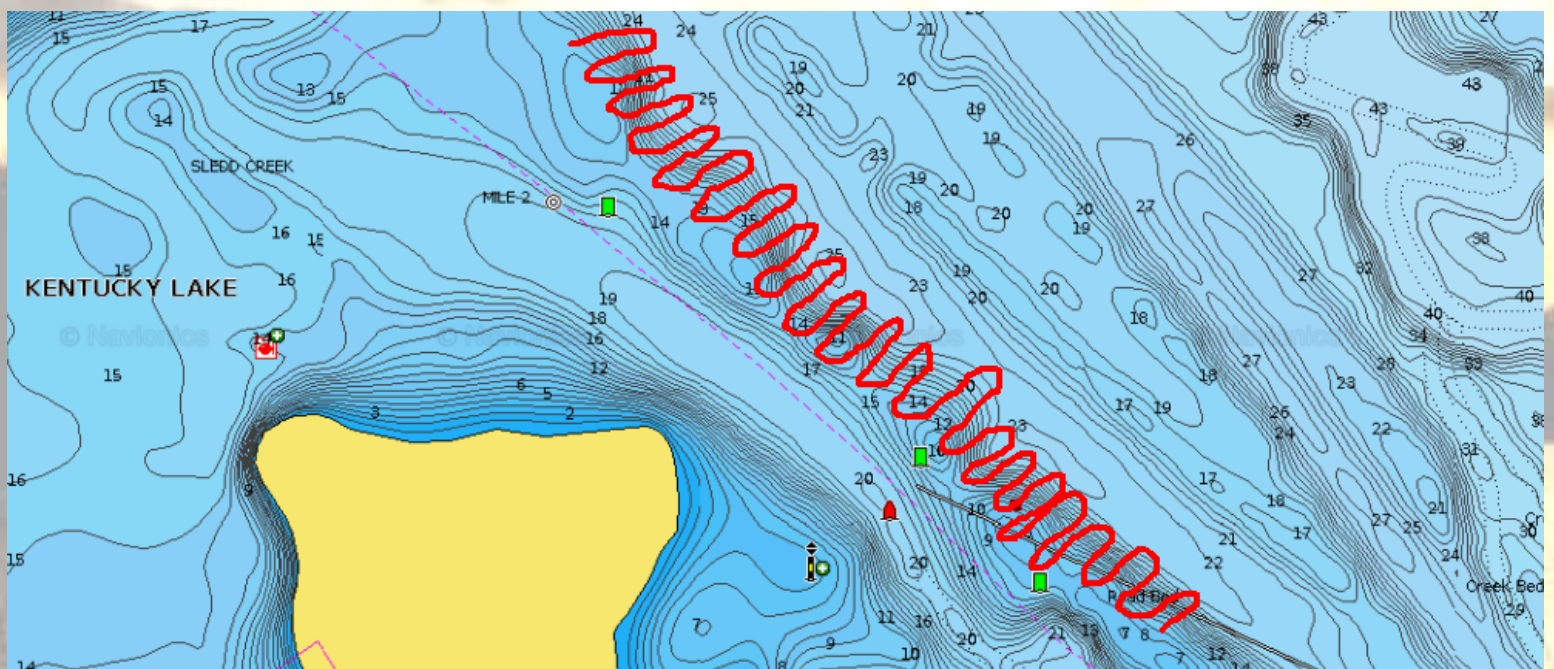
When I headed down to Kentucky Lake, I had a vague understanding of what ledge fishing was from reading articles and watching YouTube videos. Similar to most Missouri bass fishermen I know, I consider myself a top-notch “bank beater” looking for bass hanging around laydowns, points and shady docks. I had never fished Kentucky in June and knew that fishing ledges was what this lake is known for during this time of year. I hired a guide on Thursday to help speed up my learning curve and teach me how to catch those pesky bass offshore. While I still consider myself a novice at ledge fishing, I am going to try my best to pass on what I learned from the guide and from my time at Kentucky Lake in case you are still scratching your head about this whole ledge fishing thing.

First, **What is a ledge?** The textbook definition says it is a form of structure that can be found at the edge or bank of an old creek channel or the main river channel that remains underwater after the flooding of a reservoir. A definition I like better is defined as the upper lip of a drop. (It is possible to have a series of drops and ledges, like stair steps progressing down towards the deeper water. The best way to explain it is to show you what we are talking about:



On the topographical map above of Kentucky Lake, I am pointing out 3 distinct ledges. Ledge A drops down into the main river channel and is near deeper water. Ledge B & C are at the edge of an old creek bed where it pours out into the main creek. These are usually easy to see on topographical maps as you look for lines close together (meaning rapid depth change) next to area of more constant depth like a flat or creek bottom.

Now that you have found ledges on your topo, you will need to determine which ones have bass on them. For this you will need to use your sonar to scan the ledges to look for large concentrations of bass. **How do I scan?** The correct way to scan a ledge is to drive your boat at idle speed in a “stitch” pattern across the ledge keeping a sharp eye on your sonar. See the RED trail line below depicting what I am talking about.



Remember that a ledge is usually a long stretch of area and it can take some time to scan it properly. The guides and pros spend a lot of time scanning these ledges looking for big schools of bass because they know that when they find them they can load the boat quickly.

If your electronics allow, it is best to have your GPS topo map up to let you see the contours of the ledge with the screen split showing sonar or downscan. While downscan helps me to better identify types of fish and structure, it is not a requirement for scanning ledges for bass. In fact, our guide did not have downscan or side-scan and used only traditional sonar to find schools of bass.

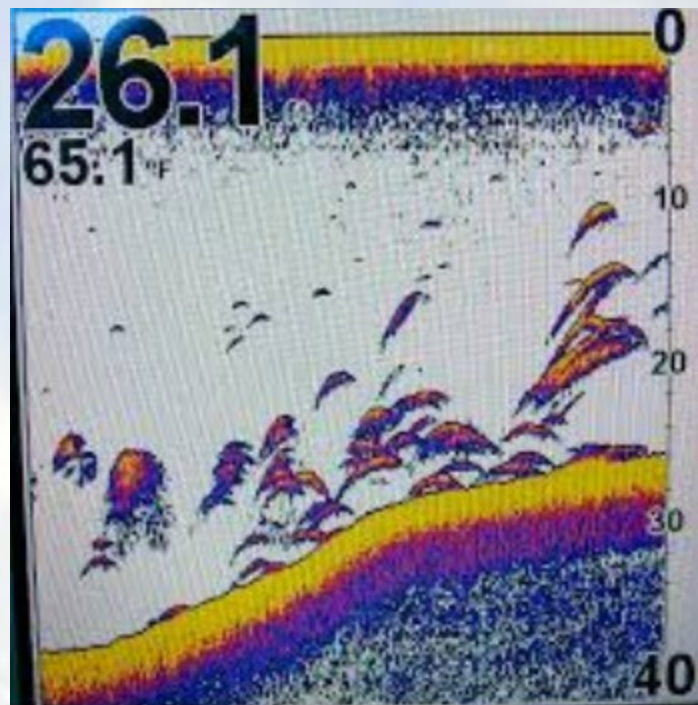
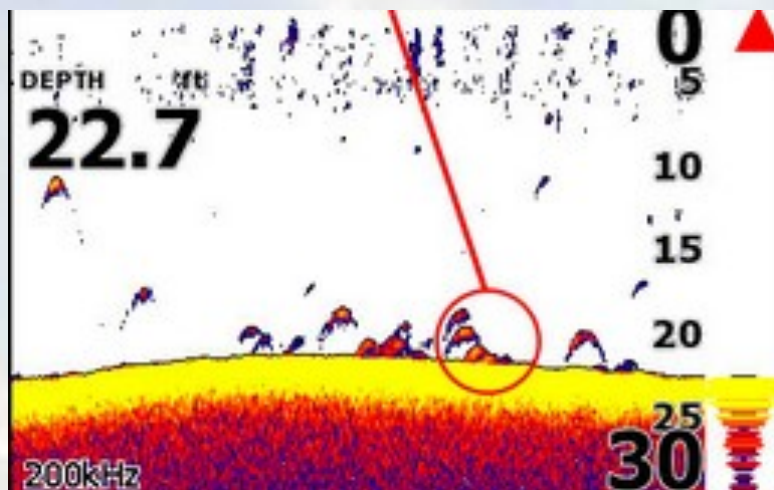


# HAWG HAWLERS BASS CLUB

## Out on a Ledge continued

### What exactly am I looking for?

If you're not the best at picking out fish on your electronics, ledge fishing is for you! Big concentrations of fish on ledges are easier to see than scattered bass in a brushy lake. These sonar shots depict some good groups of bass. If you see this on your sonar drop a marker buoy at the side of the boat IMMEDIATELY!



Below is an actual screen shot from Jeremy Goins boat on Kentucky Lake taken Friday night before the tournament. Jeremy went to this spot on Saturday morning and did a quick scan to see if the bass were still there and caught multiple keepers out of this school before 8am. Note how the bass are in about 25' of water sitting in a little depression away from the ledge so they can attack the baitfish from below. Jeremy watched another boat pull up close about 20 yards away and try to fish the same spot; however, they didn't catch a thing because they were too far away from the school. This is why it is so important to scan and pinpoint the exact location of these bass with a marker buoy before you make a cast.

Jeremy & Nathan (2nd place) caught their fish on 4" worm drop shot (wacky rigged), 3/4 oz green pumpkin jigs, Texas Rigged Red Shad Monster Worms and 8XD crankbait in Tennessee Shad.



### Additional Tips / Hints:

- If you catch multiple fish out of a school and the bite dies, the fish may have moved or just scattered. Get back behind the wheel to relocate the bass. If they are scattered, go somewhere else and come back at a later time to see if they have re-grouped.
- Target multiple ledge depths. Work shallow ledges (5' at top falling to 10-15' of water) to deep ledges (20-25' falling to 40+) and everywhere in between.
- Resist the urge to drive "down" a ledge scanning for bass. Do it the right way (slow and methodical) by "stitching" your way through the ledge.
- Don't overlook very subtle ledges with only a few feet of depth change. The obvious ledges are community holes because anybody can find them. The subtle ledges will be less pressured and you can find big schools of bass there just as easily.
- Practice various casting angles once you find a school. The fish may only bite the bait walking down the ledge or like a specific presentation. Experiment.
- 25-30 feet deep is NOT too deep. Use 3/4 oz jigs, 3/4 oz Carolina weights and heavier weights than you are used to in order to reach these depths and still feel the bottom.
- Ledges with muscle beds are popular at Kentucky Lake. While dragging your baits feel for bottom composition changes to locate muscle beds. Often you will get a bite when you feel the bottom change.
- Ledges with road beds, old creek beds, near channel swings, structure, etc... can be good producers. Don't overlook.
- Ledges just outside of bays and coves will hold bass coming out from their spawning grounds and should be targeted earlier in the season.

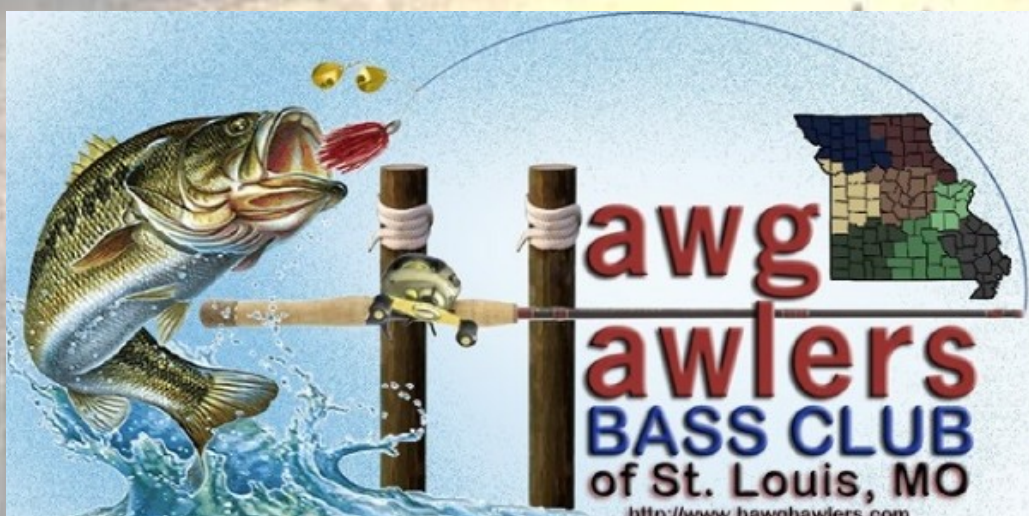


# HAWG HAWLERS BASS CLUB

## Complete Results

### Kentucky Lake II - June 2016

BOAT	NAME	CREEL		BIG BASS		Penalty	TOTAL WEIGHT	PLACE	COMMENTS
		SAT	SUN	SAT	SUN				
8A	MIKE ESTES	5	5	3.94	4.21		48.77	1	CAROLINA RIG
8B	GRIFF ESTES	5	3	3.91					JIG
16A	JEREMY GOINS	3	5		3.88		42.86	2	DROP SHOT
16B	NATHAN KEITH	5	4	4.08					JIG
17A	RICH HARPER	5	4		4.81		38.41	3	10" POWER WORMS
17B	JAKE CURRIE	5	2	4.25		0.50			C-RIG BRUSH HOG
6A	CHRIS WATKINS	5	2	4.26	3.73		30.12	4	DROP SHOT
6B	DANNY BUTLER	4	2	3.10		0.25			4" WORMS
3A	BOB SHIBE	4	0				18.97	5	BLACK CRANKS (AKA JIGS)
3B	CASEY CROSS	5	1						BRUSH HOGS & WORMS
25A	RICH SHAW	0	2				17.83	6	
25B	JASON SHAW	2	4			0.25			
15A	JAMES ROMAINE	3	3				17.38	7	
15B	STEVEN ROMAINE	3	0	2.36		0.25			
4A	GREG SHANDS	2	2	3.00			16.82	8	
4B	ANDY SHANDS	0	1						
1A	CHANCE ALBERTSON	3	0				11.25	9	
1B	BERNELL ALBERTSON	3	0			0.25			
22A	BRIAN FORREST	1	0				9.58	10	
22B	MARK FORREST	0	5						
2A	SCOTT HASTY	2	0				9.29	11	
2B	NICK DAVIS	3	0						
7A	DEAN SULLIVAN	2	2				8.68	12	
7B	DOUG LUNTE	1	0			0.75			
20A	RICK TIEMANN	0	2				8.68	13	
20B	SHAWN TIEMANN	0	2						
19A	MIKE PARMENTIER	0	3				8.25	14	
19B	LARRY RUTLEDGE	1	0						
23A	STEVE KORN	1	1				7.99	15	
23B	ALEX KORN	0	1		3.11				
26A	DAN DURBIN	2	0				7.48	16	
26B	MICHAEL DURBIN	2	0	3.12		0.50			
5A	KEN BOEGEMAN	0	3				6.20	17	
5B	DAN WINTERS	0	0						
10A	DAN KAYSER	1	0				5.65	18	
10B	MARY KAYSER	1	1						
11A	KEN RAPP	0	1		5.03		5.03	19	
11B	BRYAN MOLESKI	0	0						
12A	KEVIN HELLDORFER	1	0				3.85	20	
12B	EDDIE HINRICHS	1	0						
18A	JAMES ROMAINE JR	0	0				3.80	21	
18B	SHERRY ROMAINE	0	2			0.50			
21A	GARY BYRD	0	DQ				3.28	22	
21B	TIM BYRD	2	DQ						
14A	SCOTT LANGANKE	0	2				2.68	23	
14B	ZACH LANGANKE	0	0						
9A	MIKE JANKOWSKI	1	0				2.32	24	
9B	TIM FLEMING SR	0	0						
24A	KEN JONES	0	0				1.70	25	
24B	JACOB JONES	0	1						









# HAWG HAWLERS BASS CLUB

## Next Tournament - Mark Twain Lake

### TX INFO

**July 23-24**  
**Highway U Ramp**

Take Off Location	<b>Highway U Ramp</b>
Tournament Hours (Saturday)	6:00AM - 12:00PM
Tournament Hours (Sunday)	6:00AM - 12:00PM
Tournament Directors (Saturday)	Rich & Kristen Harper
Tournament Directors (Sunday)	Slaughter / A Shands

## TOURNAMENT SPONSOR



MARK TWAIN LAST FIVE YEAR CLUB HISTORY					
	June 2011	June 2012	June 2013	July 2014	July 2015
# BOATS	13	15	16	19	22
TOTAL FISH	20	24	41	15	61
1ST PLACE LBS	20.96	13.49	20.36	6.17	19.37
1ST PLACE BAIT	WAVE WORMS / FRIES	BRUSH HOG/ POWER WORM	CRANKS / SWIMBAITS	BRUSH HOG / SWIMBAITS	BRUSH HOGS/JIGS SWIMBAITS
BIG BASS LBS	3.89	3.38	4.7	2.61	5.05
BIG BASS BAIT	BRUSH HOG	BRUSH HOG	BLUEBERRY BRUSH HOG	SWIM BAIT	GREEN PUMPKIN BRUSH HOG
AIR TEMP	AVERAGE	?	70's -90's	Low 70's	LOW 90'S
WIND	?	10-15mph	Sat - slight/Sun 10+ Sat: Part cloudy	Little / Gusty w/ rain	slight on Sun
SKIES	?	Clear to Hazy	Sun: Clear	Overcast / Rain	Sunny
LAKE LEVEL	up 7'	down 2'	16.5' high	normal / rising	10+ high
WATER COND	muddy	stained	heavy stain	heavy stain	heavy stain
WATER TEMP	?	Mid 80's	78-84	78-81	mid 80's
LAKE RECORDS	BIG BASS: MARK HENRY 6.58 POUNDS HEAVY STRINGER: CARNAL/BOEHME 31.72 POUNDS JUNE 2007				

**Directions to Highway U Ramp:** Take Highway I-64W / 61N towards Bowling Green. Just after Bowling Green take US-54W. (Be careful passing through Curryville - It is a speed trap!). A few miles after Curryville, stay straight to continue on MO-154W. Follow to the end and at the T intersection turn right on MO-154W/MO-19N. In 5.3 miles turn left on MO-154W (just before the Junction). Go 8.7 miles (passing through Perry) and turn right on MO-107N. Go 2.7 miles and turn left on Highway U (heading West). Travel 1/2 mile down Highway U and the road to the ramp is on your right.





# HAWG HAWLERS BASS CLUB

## Sponsors 2016

# ARDENT

Rule the water.

**New Sponsor!**

**Ardent** is an American owned company headquartered in...Missouri! Ardent reels are backed with a 3 year warranty which is 2 years longer than any competitor. Ardent has many different products including rods, reels, reel cleaning kits, tournament weigh in bags, culling equipment, and line and line conditioner. Their Denny Brauer series rods are high performing and very sensitive. Best of all, they are reasonably priced at just \$99! Their Apex tournament is the best value in a high performance baitcast reel. It features a high strength aluminum frame with 8+1 ball bearings & swept back aluminum handle all for \$99.

[www.ardentoutdoors.com](http://www.ardentoutdoors.com)



**OPC Marine** has been a major sponsor of the Hawg Hawlers for years. Schedule your boat for an Outboard Annual Service which includes checking main engine components, fluid levels, greasing fittings, replacing the water pump, spark plugs, fuel filter, gear lube, pressure test of gear housing seals, and much more. There is simply too much to list!

If you are having trouble starting your boat up for the first time this year give OPC a call to get you back on the water. If you didn't winterize your boat in 2015, don't make the same mistake this year. Check out their 3 different Winterization packages before you put your boat up for the season.

Phone Number: (636) 464-2206.

6519 US Highway 61/67 Imperial, MO

[www.opcmarine.com](http://www.opcmarine.com)

**Ellis Battery** is another long running sponsor of our club and was the sponsor of this years' Clearwater Tournament. They can outfit your boat or truck with new and fresh batteries for the year. They have all kinds of batteries (lawn mower, laptop, cell phone etc...). Please call Ellis for all your battery needs!



Phone Number: (800) 455-0206

Arnold location: 4041 W. Outer Rd Arnold, MO 63010

[www.ellisbatteries.com](http://www.ellisbatteries.com)



**Culprit** is sponsoring us again for our Mark Twain tournament. They have tons of awesome baits that have been fooling bass for years. I personally love their Incredi-Craw for jig trailers and Carolina rigs. Check out their new 4" Incredi-Frog which features

"Incredible" easy casting and leg action imitating a fleeing frog! The body has tapered edges and a dense shape to make it heavier and more aerodynamic. The hook pocket enables easier hook-ups and the ribbed belly provides a smoother pull across vegetation. [www.culprit.com](http://www.culprit.com)

**G Loomis** - With 8 different lines of bass fishing rods (NRX, GLX, E6X, GL2, Classic, Bronzeback Series, Fiber-Blend) you should have no problem finding the perfect rod for whatever type of technique you prefer.

If you've never fished with a G Loomis rod before, you don't know what you are missing. These are some of the most sensitive rods out there and built for serious bass fishermen. [www.gloomis.com](http://www.gloomis.com)



**Shimano** is by far one of the world's most premier fishing tackle companies and highly respected by bass fishermen everywhere.

Given the Curado's great reputation as the gold buy standard of affordability priced bulletproof baitcasters, it's likely there are more of these reels in bass boat rod-lockers than any other make. It's hard to believe that even in the spinning reel world, Shimano hit another home run with their Stradic Ci4 (check the online reviews if you don't believe me). I recently picked up one of their Crucial rods a Bass Pro and let me tell you it is one of the lightest rods I've ever handled.

[www.fish.shimano.com](http://www.fish.shimano.com)



# HAWG HAWLERS BASS CLUB

## Sponsors 2016



**Hillbilly Yacht Club** 14152 Navaho Beach Ln. Gravois Mills, MO  
Small town bar and grill on the lake in the Gravois Arm. You can arrive by land or by water! They have bands and special gatherings for sporting events. Next time you are at the lake stop in and get yourself some grub and a beer, you will not be disappointed.



**Bee Blessed Acres**  
**Local Raw Honey**



*"Honey from your own backyard"*

**Lincoln County, MO**

**Olive Garden**

1280 W. Pearce Blvd. Wentzville, MO 63385  
Dine in or Carryout (636) 332-2250

## Other News

**Membership Forms** - You must have your membership forms in the Wednesday before the tournament to Dan Durbin. If your membership form is received after that date you will be considered a late entry and will be the moved to the last take-off and be ineligible for attendance prizes.



# HAWG HAWLERS BASS CLUB

## Sponsors 2016

