

HAWG HAWLERS BASS CLUB

1988 - 2017 CELEBRATING 30 YEARS

Pomme 2017

7th Annual G Loomis Tournament

1st Place - Jason & Rich Shaw



19 Fish 65.19 lbs

Contents

1st Place	1
Lake news	1
Tournament Sponsor	2
Big Bass	2
Results (Places)	3
Event Pictures	4-7
Ledge Fishing	8 - 9
Complete Results	10
AOY Race 2017	11
Next Tournament / Other news	12
Sponsors	13-15



Holy Freaking Cow!!! The Father-Son team of Jason & Rich Shaw shattered the club record total heaviest stringer by more than 16 pounds at Pomme de Terre! They caught 19 fish total with an average fish weight of 3.43 pounds. Their 2 biggest fish weighed in at 5.40lbs (Jason) and 4.67lbs (Rich). Jason & Rich caught their fish offshore at the edge of a large flat using big swimbaits, 6XD crankbaits, Jigs, and Carolina Rigged Creature Baits. They spotted several bass hanging out at the edge of the deeper water near the flat using their electronics while pre-fishing. They were able to re-locate these fish on tournament day and put the hammer down on them. This is definitely one for the record books and a trip that Jason & Rich will never forget. **A big round of applause for Jason & Rich!!!**

Lake News

The lake level was over 20' high in May and had steadily been falling. By the time the tournament began, the lake was around 11' high and still falling. The lake had much more of a stain to it than normal and the shoreline was mostly all flooded bushes & trees. Several people reported catching fish on the old shoreline (10-15' of water) using Texas rigged baby brush hogs.

The Pizza Party on Saturday evening was a blast (despite the rain). Thank you to Nemo Lanes for the discount!!!

Number of Boats	24
Number of Fish Caught	190
Total weight all Fish	383.25
Avg Weight per Fish	2.02
# Fish > 4 lbs	6

Water Temperature	70's
Water Clarity	Stained / Heavy Stain
Air Temperature	Low 64 / High 82
Wind / Sky	Rain / Overcast
Water Level	High (851' & falling 6" per day)

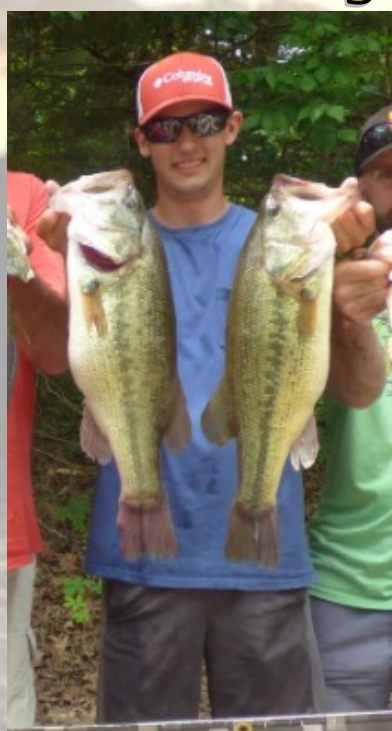
HAWG HAWLERS BASS CLUB

Tournament Sponsor



BIG BASS

Saturday



Jason Shaw caught the tournament big bass of 5.40 lbs on a custom painted Strike King 6XD. This bass is now the biggest bass of the year!

Sunday



Dan Kayser caught a 4.86 pound bass on Sunday to take the big bass of the day.

He caught the fish on an Okeechobee Craw Beaver

HAWG HAWLERS BASS CLUB

Places



2nd Place
Ken & Jacob Jones



3rd Place
Dave Sona & Matt Gharst



4th Place
Chris Himstedt & Greg Brock



5th Place
Teddy Reim & Scott Hasty



6th Place
Mike Parmentier & Jason Kent

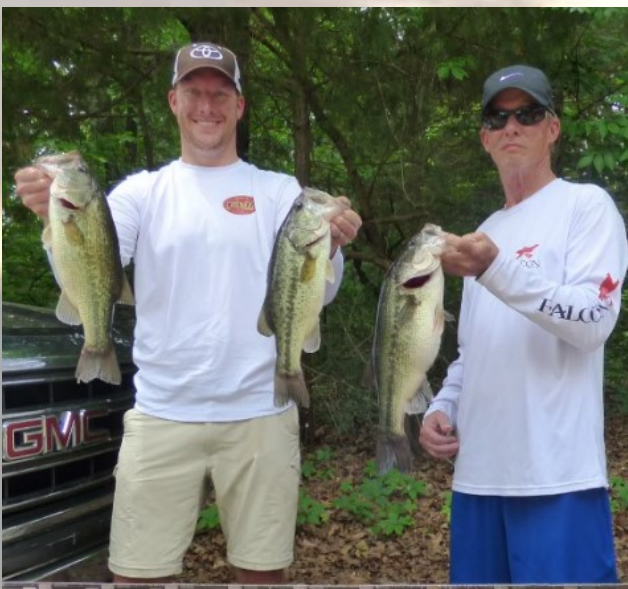
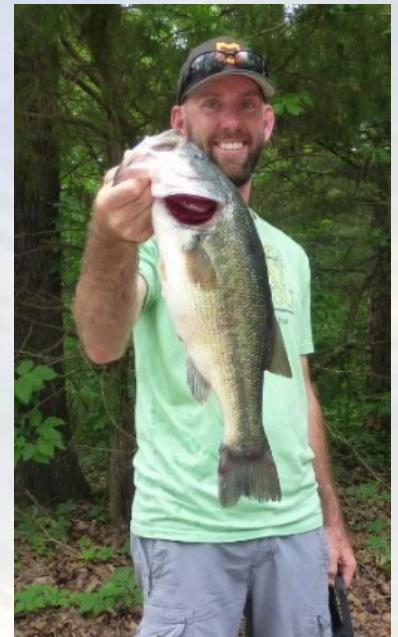
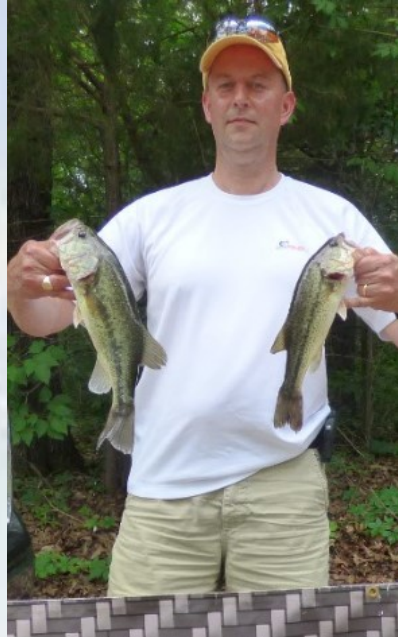


7th Place
Andy Shands & Eddie Hinrichs



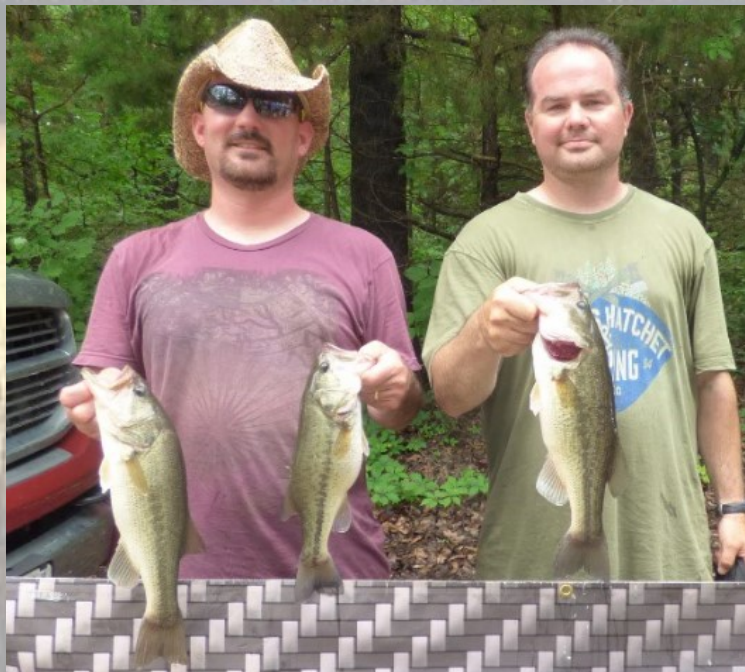
HAWG HAWLERS BASS CLUB

Event Pictures



HAWG HAWLERS BASS CLUB

Event Pictures



HAWG HAWLERS BASS CLUB

Event Pictures



HAWG HAWLERS BASS CLUB

Event Pictures

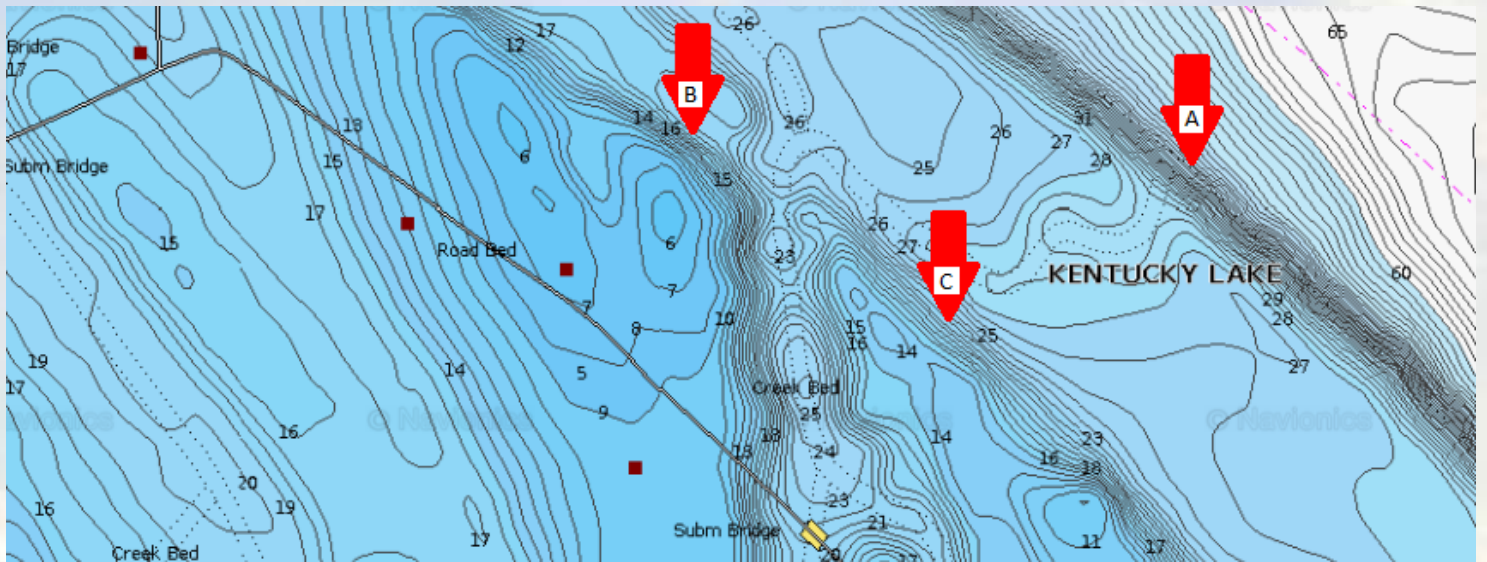
Hawg Hawlers Bass Club											
Pomme de Terre June 3-4											
	BB	SAT	BB	SUN	TEAM WEIGHT SAT	TEAM WEIGHT SUN	Tournament Total Weight	Tournament Total Weight	Tournament Total Weight	Tournament Total Weight	Tournament Total Weight
1 A			5	5	19.28	20.84	2	20	40.12		
1 B			5	5							
2 A			1	5	3.05	16.36	6	16	19.41		
2 B			386	1	4						
3 A			2	2	12.34	4.37			16.71		
3 B			2	0							
4 A			3	1	5.81	1.56			7.37		
4 B			1	0							
5 A			3	5	9.83	14.48	5	16	24.31		
5 B			3	5							
6 A			0	1	0	1.65			1.65		
6 B			0	0							
7 A			0	0/0	2.60	0/0			2.60		
7 B			2	0/6							
8 A			449	2	4	5.96	20.76	4	13	26.12	
8 B			2	5							
9 A			2	0	3.55	0			3.55		
9 B			0	0							
10 A			2	5	3.00	16.16	2	16	19.16		
10 B			1	4							
11 A			309	1	5	3.92	11.79				
11 B			486	0	2	4.67	8.89				
12 A			3	1	3.98	4.09			8.07		
12 B			1	0							
13 A			1	4	2.94	6.35			9.29		
13 B			0	0							
14 A			1	1	3.63	1.42			5.05		
14 B			2	0							
16 A			6	1	0	5.40			5.40		
16 B			0	2							
17 A			4.91	1	3	4.91	8.72				
17 B			0	1							
18 A			0	0	1.92	1.44			3.36		
18 B			1	1							
19 A			4.77	5	5	33.98	31.46	65.44			
19 B			T	4	5	4.25					
20 A			0	2	0	10.42			10.42		
20 B			0	5							
21 A			2	1	6.49	5.00			11.49		
21 B			2	1							
22 A			0/0	0/0	0/0	0/0			0/0		
22 B			0/8	0/0							
23 A			3.18	0	5	14.99			14.99		
23 B			0	1							
24 A			1	0	1.29	0			1.29		
24 B			0	0							
25 A			388	5	5	18.61	19.98	38.59			
25 B			5	5							
26 A			0	2	3.31	2.90			6.21		
26 B			2	0							
27 A											
27 B											
28 A											
28 B											
29 A											
29 B											
30 A											
30 B											



HAWG HAWLERS BASS CLUB

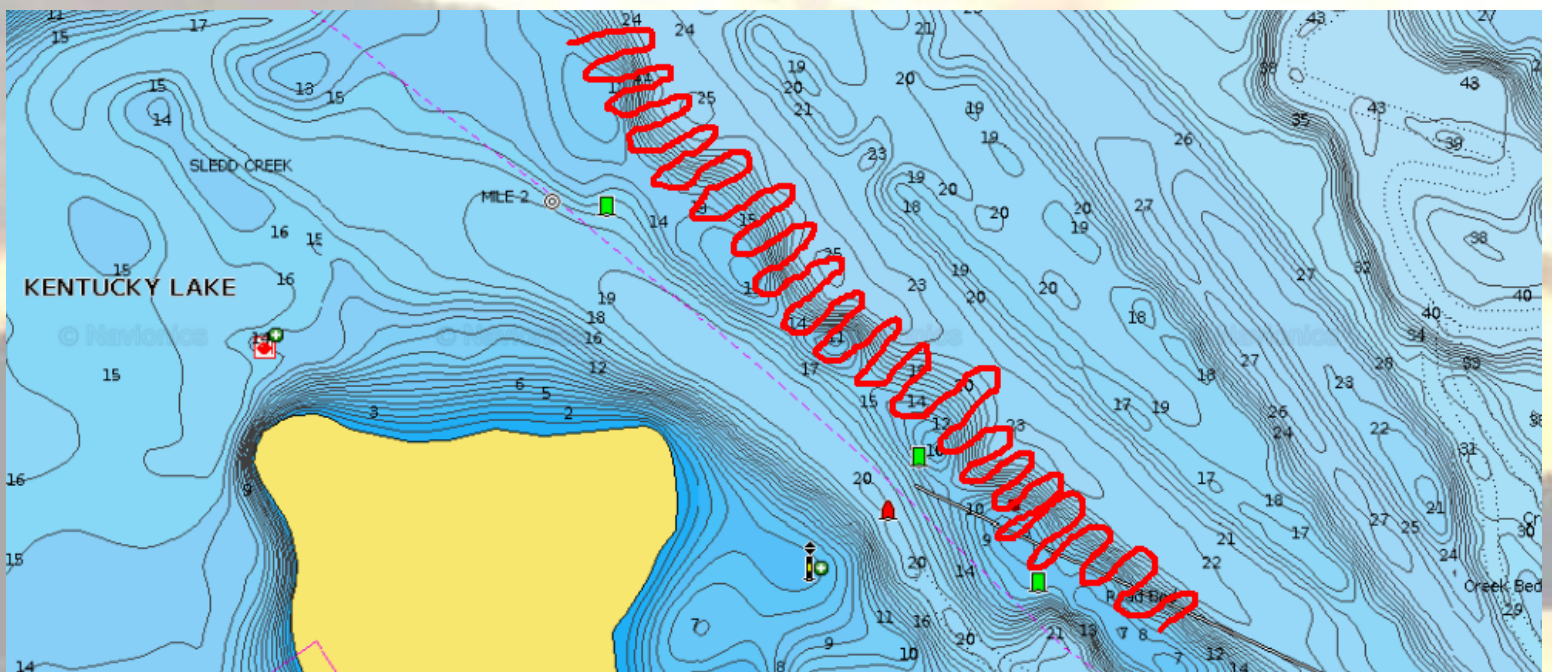
Fishing Ledges....

First, **What is a ledge?** The textbook definition says it is a form of structure that can be found at the edge or bank of an old creek channel or the main river channel that remains underwater after the flooding of a reservoir. A definition I like better is defined as the upper lip of a drop. (It is possible to have a series of drops and ledges, like stair steps progressing down towards the deeper water. The best way to explain it is to show you what we are talking about:



On the topographical map above of Kentucky Lake, I am pointing out 3 distinct ledges. Ledge A drops down into the main river channel and is near deeper water. Ledge B & C are at the edge of an old creek bed where it pours out into the main creek. These are usually easy to see on topographical maps as you look for lines close together (meaning rapid depth change) next to area of more constant depth like a flat or creek bottom.

Now that you have found ledges on your topo, you will need to determine which ones have bass on them. For this you will need to use your sonar to scan the ledges to look for large concentrations of bass. **How do I scan?** The correct way to scan a ledge is to drive your boat at idle speed in a "stitch" pattern across the ledge keeping a sharp eye on your sonar. See the RED trail line below depicting what I am talking about.



Remember that a ledge is usually a long stretch of area and it can take some time to scan it properly. The guides and pros spend a lot of time scanning these ledges looking for big schools of bass because they know that when they find them they can load the boat quickly.

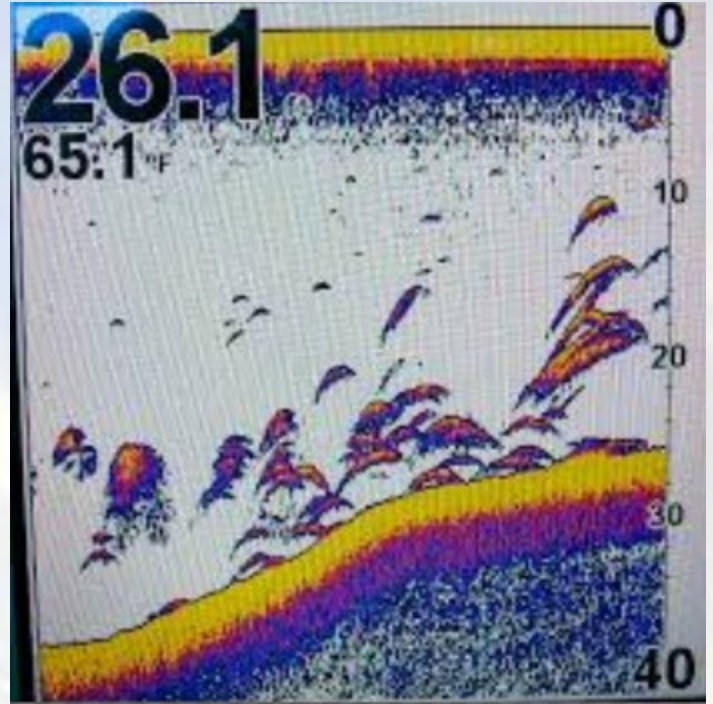
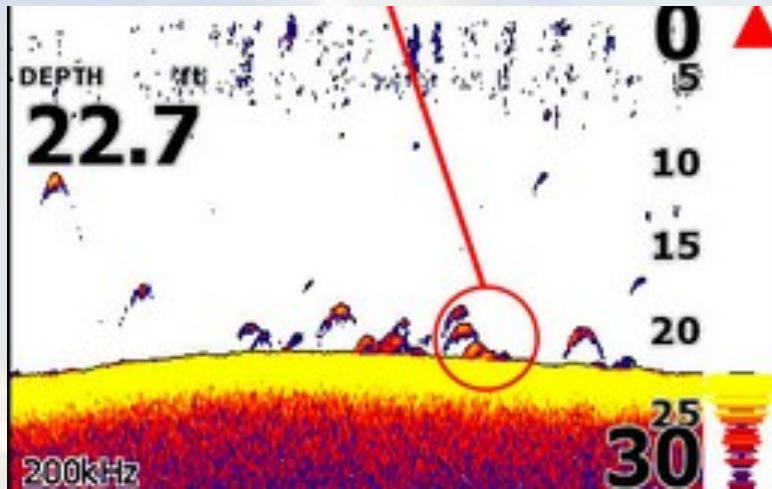
If your electronics allow, it is best to have your GPS topo map up to let you see the contours of the ledge with the screen split showing sonar or downscan. While downscan helps me to better identify types of fish and structure, it is not a requirement for scanning ledges for bass. In fact, our guide did not have downscan or side-scan and used only traditional sonar to find schools of bass.

HAWG HAWLERS BASS CLUB

Ledge Fishing continued

What exactly am I looking for?

If you're not the best at picking out fish on your electronics, ledge fishing is for you! Big concentrations of fish on ledges are easier to see than scattered bass in a brushy lake. These sonar shots depict some good groups of bass. If you see this on your sonar drop a marker buoy at the side of the boat IMMEDIATELY!



Below is an **actual screen shot from Jeremy Goins** boat on Kentucky Lake taken during last year's tournament. Jeremy went to this spot on Saturday morning and caught multiple keepers out of this school before 8am. Note how the bass are in about 25' of water sitting in a little depression away from the ledge so they can attack the baitfish from below. Jeremy watched another boat pull up close about 20 yards away and try to fish the same spot; however, they didn't catch a thing because they were too far away from the school. This is why it is so important to scan and pinpoint the exact location of these bass with a marker buoy before you make a cast.

Jeremy & Nathan (2nd place) caught their fish on 4" worm drop shot (wacky rigged), 3/4 oz green pumpkin jigs, Texas Rigged Red Shad Monster Worms and 8XD crankbait in Tennessee Shad.



Additional Tips / Hints:

- If you catch multiple fish out of a school and the bite dies, the fish may have moved or just scattered. Get back behind the wheel to relocate the bass. If they are scattered, go somewhere else and come back at a later time to see if they have re-grouped.
- Target multiple ledge depths. Work shallow ledges (5' at top falling to 10-15' of water) to deep ledges (20-25' falling to 40+) and everywhere in between.
- Resist the urge to drive "down" a ledge scanning for bass. Do it the right way (slow and methodical) by "stitching" your way through the ledge.
- Don't overlook very subtle ledges with only a few feet of depth change. The obvious ledges are community holes because anybody can find them. The subtle ledges will be less pressured and you can find big schools of bass there just as easily.
- Practice various casting angles once you find a school. The fish may only bite the bait walking down the ledge or like a specific presentation. Experiment.
- 25-30 feet deep is NOT too deep. Use 3/4 oz jigs, 3/4 oz Carolina weights and heavier weights than you are used to in order to reach these depths and still feel the bottom.
- Ledges with muscle beds are popular at Kentucky Lake. While dragging your baits feel for bottom composition changes to locate muscle beds. Often you will get a bite when you feel the bottom change.
- Ledges with road beds, old creek beds, near channel swings, structure, etc... can be good producers. Don't overlook.
- Ledges just outside of bays and coves will hold bass coming out from their spawning grounds and should be targeted earlier in the season.

HAWG HAWLERS BASS CLUB

Complete Results

BOAT	NAME	CREEL		BIG BASS		Penalty	TOTAL WEIGHT	PLACE	COMMENTS
		SAT	SUN	SAT	SUN				
19A	JASON SHAW	5	5	5.40			65.19	1	6XD / SWIMBAIT JIGS / CAROLINA RIG
19B	RICH SHAW	4	5		4.67	0.25			
1A	KEN JONES	5	5				40.12	2	TEX RIG HOODADDDY DARK GRN PUMPKIN
1B	JACOB JONES	5	5						
25A	MATT GHARST	5	5				38.59	3	FORK TAILS
25B	DAVE SONA	5	5						
8A	CHRIS HIMSTEDT	2	4		4.49		26.12	4	
8B	GREG BROCK	2	5			0.5			
5A	SCOTT HASTY	3	5				24.31	5	
5B	TED REIM	3	5						
2A	EDDIE HINRICHS	1	5				19.41	6	
2B	ANDY SHANDS	1	4		3.86				
10A	MIKE PARMENTIER	2	5				19.16	7	
10B	JASON KENT	1	4			0.25			
3A	BRIAN FORREST	2	2				16.71	8	
3B	MARK FORREST	2	0	4.73					
11A	CHANCE ALBERTSON	1	5				15.71	9	
11B	ANDY BAKER	1	1		3.09				
23A	PAM WAKIM	0	5				14.99	10	
23B	TERRI SULLIVAN	0	1						
17A	JEREMY GOINS	1	3	4.91			13.63	11	
17B	MICAJAH GOINS	0	1						
12A	DAN KAYSER	0	2		4.86		13.56	12	
12B	MARY KAYSER	3	1						
21A	DEAN SULLIVAN	2	1				11.49	13	
21B	BOB TREADWAY	2	1						
20A	JERRY HUSAK	0	2				10.42	14	
20B	JEFF ROMAINE	0	5						
14A	TIM FLEMING SR	1	4				9.29	15	
14B	TIM FLEMING JR	0	0						
13A	JAMES ROMAINE	2	3				8.07	16	
13B	STEVEN ROMAINE	1	0						
4A	DAN DURBIN	3	1				7.37	17	
4B	MICHAEL DURBIN	1	0						
26A	JIM TRUEMAN	0	2				6.21	18	
26B	SUE TRUEMAN	2	0						
16A	RICH HARPER	0	1				5.40	19	
16B	DANNY BUTLER	0	2						
15A	BRYAN SLAUGHTER	1	1				5.05	20	
15B	GREG SHANDS	2	0						
9A	SCOTT LANGANKE	2	0				3.55	21	
9B	THOMAS LANGANKE	0	0						
18A	KEN RAPP	0	0				3.36	22	
18B	JOY RAPP	1	1						
7A	NICK DAVIS	0	DQ				2.60	23	
7B	BRAD DAVIS	2	DQ						
6A	KEN BOEGEMAN	0	1				1.65	24	
6B	KIRA BOEGEMAN	0	0						
24A	STEVE KORN	1	0				1.29	25	
24B	ALEX KORN	0	0						
TOTALS		77	113				383.25		



HAWG HAWLERS BASS CLUB

AOY Race

2017- Point Standings....									Hawg Hawlers Bass Club								P N L T Y	TOTAL POINTS
POS	ANGLER	(NUMBER OF FISH)					CREEL POINTS	ATT POINTS	P L A C E P O I N T S					BIG DIR				
		CLR	LOZ	Ken Lk	ROCK	POM			CLR	LOZ	KenLk	TROCK	POM I					
Total Fish --->		39	125	108	235	190	2091	966	90	110	42	90	42	41	52	0	3524	
1	Dave Sona	4	7	9	3	10	99	15	6	7	6		4	4			141	
2	Jason Shaw	2	4	3	10	10	87	15	4	6	1	8	6	5			132	
3	Mike Parmentier	0	5	7	10	7	87	15	5	5	3	7					122	
4	Matt Gharst	0	2	9	5	10	78	15	6	7	6		4				116	
5	Rich Shaw	0	2	3	7	9	63	15	4	6	1	8	6	5			108	
6	Ken Jones	1	0	2	10	10	69	15	3			9	5		3		104	
7	Jacob Jones	1	0		10	10	63	12	3			9	5		3		95	
8	Rich Harper	1	0	8	7	1	51	15			4	5			4		79	
9	Scott Hasty	0	3	0	6	8	51	15		2			2		3		73	
10	Andy Shands	2	2	3	3	5	45	15					1		3		64	
11	Dan Kayser	0	6	3		2	33	12		8				4			57	
12	Bob Shibe	2	8				30	6	8	10					3		57	
13	Jeremy Goins	0	1	1	5	4	33	15				5			3		56	
14	Pam Wakim		3	2	3	5	39	12							3		54	
15	Steve Korn	1	0	1	9	1	36	15							3		54	
16	Tim Fleming Sr	2	2	2	1	5	36	15	1								52	
17	Mike Jankowski	2	3	1	4	0	30	15		4		2					51	
18	Eddie Hinrichs	3	0			6	27	9	9				1	5			51	
19	Dean Sullivan	0	0	2	5	3	30	15	2						3		50	
20	Greg Shands	0	2	3	3	2	30	15		2					3		50	
21	Mary Kayser	0	5	1		4	30	12		8							50	
22	Don Nickel	0	5		7		36	9		3		1					49	
23	Casey Cross	2	2	2			18	9	8	10					3		48	
24	Mark Chapman	1	0	4	5		30	12	2						3		47	
25	Shawn Tiemann	0	2		8		30	9				6					45	
26	Tim Dring	1	7				24	6		9				5			44	
27	Rick Tiemann	1	2		6		27	9				6					42	
28	Nick Davis	0	2	0	6	0	24	15				3					42	
29	Chance Albertson	0	0		2	6	24	12						4			40	
30	Mike Estes	1		8			27	6			5						38	
31	Larry Rutledge	3			5		24	6				7					37	
32	Mick Schwent		2	1	6		27	9									36	
33	Greg Brock		0		1	7	24	9					3				36	
34	Chris Himstedt	0	1		0	6	21	12					3				36	
35	Danny Butler	0	0	2	1	2	15	15			4						34	
36	Corey Dickerson		4		5		27	6									33	
37	Jeff Schwent		1		5		18	6				4		5			33	
38	Ken Boegeman	0	4	0	0	1	15	15							3		33	
39	Teddy Reim	0				8	24	6					2				32	
40	Jason Kent	2				5	21	6	5								32	
41	Danny Nickel	0	1		5		18	9		3		1					31	
42	Jim Romaine			0	2	5	21	9									30	
43	Sue Trueman			0	5	2	21	9									30	
44	Jim Trueman	0		0	4	2	18	12									30	
45	Dave Jankowski				7	0	21	6				2					29	
46	Griff Estes			7			21	3			5						29	
47	Dan Bean				7		21	3				4					28	
48	Terri Sullivan			4	1	1	18	9									27	
49	Dan Durbin	0		0	1	4	15	12									27	
50	Jerry Husak		1	2	0	2	15	12									27	

www.gloomis.com

HAWG HAWLERS BASS CLUB

Next Tournament - KY Lake (June 24-25)



June 24-25
Sportsman's Lodge
 12710 US-68
 Benton, KY 42025
 (270) 354-8333

Take Off Location	Sportsman's Lodge
Tournament Hours (Saturday)	5:30AM - 12:30PM
Tournament Hours (Sunday)	5:30AM - 11:30PM
Tournament Directors (Saturday)	Gary Byrd / Partner
Tournament Directors (Sunday)	Jim & Steve Romaine

2016 Kentucky II Top 10

BOAT	NAME	CREEL		BIG BASS		Penalty	TOTAL WEIGHT	PLACE	COMMENTS
		SAT	SUN	SAT	SUN				
8A	MIKE ESTES	5	5	3.94	4.21		48.77	1	CAROLINA RIG
8B	GRIFF ESTES	5	3	3.91					JIG
16A	JEREMY GOINS	3	5		3.88		42.86	2	DROP SHOT
16B	NATHAN KEITH	5	4	4.08					JIG
17A	RICH HARPER	5	4		4.81		38.41	3	10" POWER WORMS
17B	JAKE CURRIE	5	2	4.25		0.50			C-RIG BRUSH HOG
6A	CHRIS WATKINS	5	2	4.26	3.73		30.12	4	DROP SHOT
6B	DANNY BUTLER	4	2	3.10		0.25			4" WORMS
3A	BOB SHIBE	4	0				18.97	5	BLACK CRANKS (AKA JIGS)
3B	CASEY CROSS	5	1						BRUSH HOGS & WORMS
25A	RICH SHAW	0	2				17.83	6	
25B	JASON SHAW	2	4			0.25			
15A	JAMES ROMAINE	3	3				17.38	7	
15B	STEVEN ROMAINE	3	0	2.36		0.25			
4A	GREG SHANDS	2	2	3.00			16.82	8	
4B	ANDY SHANDS	0	1						
1A	CHANCE ALBERTSON	3	0				11.25	9	
1B	BERNELL ALBERTSON	3	0			0.25			
22A	BRIAN FORREST	1	0				9.58	10	
22B	MARK FORREST	0	5						

Other News

Wappapello

Due to the excessive flooding at Lake Wappapello, we will likely take off from a different ramp than Sundowner. Please keep checking the message board periodically for information and updates.

2018 Officers

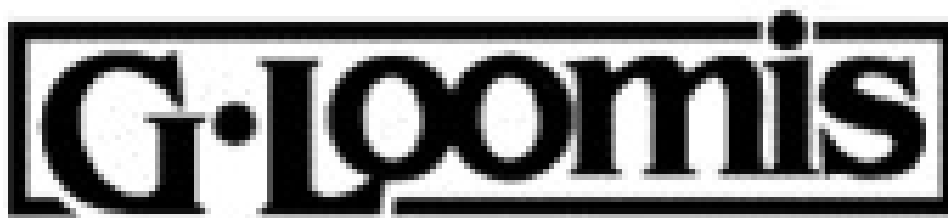
Are you interested in becoming a Club Officer next year? If so, please let contact any current officer to discuss what positions might be available and how you can help.

Tournament Directors

There are still spots available for Tournament Directors for the 2017 season. Please let Dan Durbin or any other officer know if you would like to volunteer for one of the upcoming tournaments.

HAWG HAWLERS BASS CLUB

Sponsors 2017



SHIMANO

HAWG HAWLERS BASS CLUB

Sponsors 2017



HAWG HAWLERS BASS CLUB

Sponsors 2017



101 GROCERY & BAIT
EST. 1947

Bait & Tackle

Fresh made to order Pizza!

Open 5AM-10PM EVERYDAY
870-467-5223 www.101groceryandbait.com

Live Bait

3287 Hwy 101 & Howard Cove Rd
Gamaliel, AR



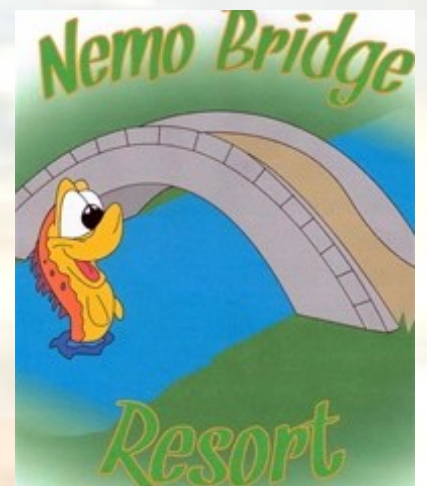
We use

CloudBerry Backup



ROCK HARBOR RESORT & MOTEL

LAKE ROAD 5-35



Nemo Bridge Resort



Sportsman's Lodge
On Kentucky Lake



Red Oak Resort & R.V. Park

Lake of the Ozarks



Miller's Motor lodge

Wappapello, MO



Olive Garden

1280 W. Pearce Blvd. Wentzville, MO 63385
Dine in or Carryout (636) 332-2250



Bee Blessed Acres
Local Raw Honey

"Honey from your own backyard"

Lincoln County, MO



Kings Cove RESORT

TABLE ROCK LAKE • MISSOURI